



Government of India
Ministry of Earth Sciences



India Meteorological Department

PRESS RELEASE - 8

Time of issue: 1430 hours IST

Dated: 19-05-2021

Sub: Extremely Severe Cyclonic Storm “Tauktae” (pronounced as Tau’Te) weakened into a depression over South Rajasthan

Yesterday’s cyclonic storm over Saurashtra region moved northeastwards and weakened into a deep depression over Gujarat region in the night (2030 hrs IST of 18th May) and into a depression over south Rajasthan in the early morning (0530 hrs IST of 19th May).

Continuing to move northeastwards, it lay centered at 0830 hrs IST of today, the 19th May over **southeast Rajasthan** near latitude 24.9°N and longitude 73.7°E, about 30 km south-southwest of Udaipur (Rajasthan).

It is very likely to continue to move northeastwards and weaken gradually into a Well Marked Low pressure area during next 12 hours. The remnant of the system is very likely to move further northeastwards across Rajasthan to Uttar Pradesh during the next two days.

Warnings:

(i) Rainfall:

- Light to moderate rainfall at most places with heavy to very heavy falls at isolated places very likely over East Rajasthan on 19th May.
- The interaction of the remnant low pressure system with a trough in westerlies associated with a Western Disturbance is very likely to cause light to moderate rainfall at most places with heavy to very heavy falls and extremely heavy falls at isolated places over Uttarakhand , heavy to very heavy rainfall at isolated places over Himachal Pradesh, Haryana, West Uttar Pradesh and Heavy rainfall at isolated places over Punjab, East Uttar Pradesh, north Madhya Pradesh and West Rajasthan during next 24 hours.

(ii) Wind warning

- Squally wind speed reaching 45-55 kmph gusting to 65 kmph is likely to prevail over East Rajasthan and adjoining west Madhya Pradesh during next 12 hours.

The 24 hours accumulated rainfall realised over various coastal states along the west coast of India in association with this system is given in Annexure-1.

Kindly visit www.rsmcnewdelhi.imd.gov.in and www.mausam.imd.gov.in for regular updates.

Contact: Cyclone Warning Division, Office of the Director General of Meteorology,
India Meteorological Department, Ministry of Earth Sciences.

Phone: (91) 11-24652484, FAX: (91) 11-24643128, 24623220, E-mail: cwdhq2008@gmail.com, Website: rsmcnewdelhi.imd.gov.in

Spatial rainfall distribution: Isolated: <25%, A few: 26-50%, Many: 51-75%, Most: 76-100%

Rainfall amount (mm): Heavy rain: 64.5 – 115.5, Very heavy rain: 115.6 – 204.4, Extremely heavy rain: 204.5 or more.

24 hours realized accumulated rainfall ending at 0830 hours IST of date is given below:

14 May 2021

SOUTH INTERIOR KARNATAKA: Balehonnur-7,
KERALA & MAHE: Mavelikara-15, Konni-14, Kayamkulam-14, Kayamkulam Agri-13, Neyyattinkara-11, Nedumangad-11, Kottayam-11, Kurudamannil-10, Varkala-10, Mancompu-9, Kozha-9, Vaikom-9, Haripad-9, Kumarakam-9, Chalakudi-8, Alwaye-8, Thritla-7, Kochi C.I.A.L.-7, Ernakulam South-7,
LAKSHADWEEP: Agathi-12.

15 May 2021

VIDARBHA: Ballarpur-7,
COASTAL KARNATAKA: Mangaluru AP Obsy-8, Panambur Obsy-7, Mangaluru-7,
KERALA & MAHE: Kochi I.A.F.-21, Peermade To-21, Kodungallur-20, Enamakkal-19, Ernakulam South-17, Kumarakam-16, Kannur-16, Kollam-16, Alapuzha-16, Chalakudi-15, Irinjalakuda-15, Ponnani-14, Pattambi-14, Vaikom-14, Cherthala-13, Kozhikode-13, Varkala-13, Mancompu-13, Thritla-13, Mavelikara-12, Alwaye Pwd-12, Kayamkulam Agri-12, Kayamkulam-12, Kurudamannil-11, Konni-11, Quilandi-11, Perumpavur-11, Taliparamba-11, Vellanikkara-11, Kochi C.I.A.L.-11, Kottayam-11, Haripad-11, Vadakkancherry-11, Kozha-11, Kanjirappally-10, Munnar Kseb-10, Manjeri-10, Mahe-9, Perinthalamanna-9, Vadakara-9, Ottapalam-9, Punalur-9, Tellichery-9, Hosdurg-9, Piravam-8, Nilambur-8, Angadipuram-8, Vytiri-8, Karipur Ap.-7, Thodupuzha-7, Kudulu-7, Neyyattinkara-7,
LAKSHADWEEP: Agathi-10, Amini-8,

16 May 2021

KONKAN & GOA: Canacona-7, Pernem-7,
COASTAL KARNATAKA: Kollur-24, Manki-19, Kota-19, Puttur Hms-19, Kundapur-17, Bhatkal-16, Udupi-15, Dharmasthala-14, Mani-13, Mulki-12, Karkala-11, Shirali Pto-11, Mangaluru Ap Obsy-11, Kadra-11, Panambur Obsy-10, Karwar Obsy-10, Mudubidre-10, Belthangadi-9, Honavar Obsy-9, Gokarna-9, Vitla Arg-9, Sulya-8, Siddapur-8, Mangaluru-8,
N. I. KARNATAKA: Vijayapura Pto-8,
S. I. KARNATAKA: Hosanagara-19, Bhagamandala-17, Kalasa-13, Virajpet-13, Linganamakki Hms-9, Thalaguppa-7, Sagar-7,
KERALA & MAHE: Mahe-24, Vadakara-23, Vytiri-21, Taliparamba-17, Tellichery-17, Quilandi-16, Ernakulam South-14, Kochi I.A.F.-14, Kochi C.I.A.L.-13, Alwaye Pwd-13, Manantoddy-13, Irikkur-13, Kannur-12, Piravam-11, Perumpavur-11, Enamakkal-11, Kudulu-10, Thodupuzha-10, Karipur Ap.-10, Munnar Kseb-10, Varkala-10, Kozha-9, Vaikom-9, Nilambur-9, Neyyattinkara-9, Idukki-9, Vadakkancherry-8, Nedumangad-8, Parumbikulam-8, Irinjalakuda-8, Perinthalamanna-8, Pattermbi-8, Angadipuram-8, Kozhikode-8, Ottapalam-8, Peermade To-8, Chalakudi-7, Ponnani-7, Thiruvananthapuram-7, Ambalavayal-7, Mannarkkad-7, Myladumpara Agri-7, Thritla-7,

17 May 2021

KONKAN & GOA: Sawantwadi-37, Ratnagiri Imd Obsy-36, Dodamarg-25, Panjim Imd Obsy-23, Malvan-21, Kudal-20, Devgad-20, Kankavli-19, Vengurla IMD-18, Mapusa-17, Lanja-16, Dabolim N.A.S.- Navy-15, Vaibhavwadi-15, Sangameshwar Devrukh-14, Guhagarh-12, Margao-12, Dapoli Agri-8, Harnai Imd Obsy-8, Sanguem-7,
MADHYA COASTAL KARNATAKA: Kadra-11, Honavar Obsy-7, Kollur-7,

Contact: Cyclone Warning Division, Office of the Director General of Meteorology,
India Meteorological Department, Ministry of Earth Sciences.

Phone: (91) 11-24652484, FAX: (91) 11-24643128, 24623220, E-mail: cwdhq2008@gmail.com, Website: rsmcnewdelhi.imd.gov.in

Spatial rainfall distribution: Isolated: <25%, A few: 26-50%, Many: 51-75%, Most: 76-100%

Rainfall amount (mm): Heavy rain: 64.5 – 115.5, Very heavy rain: 115.6 – 204.4, Extremely heavy rain: 204.5 or more.

KERALA & MAHE: Kozhikode-7, Enamakal-7, Manjeri-7, Karipur Ap.-7, Quilandi-7,

18 May 2021

GUJARAT REGION: Umergam-18, Daman-15, Daman Fmo-13, Surat City-9, Khanvel-8, Valsad-8, Silvassa-7,

SAURASHTRA & KUTCH: Bagasra-21, Gir Gadhada-19, Una-17, Savarkundla-17, Palitana-16, Amreli-13, Mahuva-13, Rajula-13, Khambha-13, Babra-13, Gadhda-11, Visavadar-10, Diu-9, Umralla-9, Bhavnagar-8, Dhari-7, Jesar-7,

KONKAN & GOA: Palghar Agri-30, Dahanu Imd Obsy-28, Santacruz Imd Obsy-23, Devgad-23, Sawantwadi-21, Colaba IMD Obsy-21, Talasari-17, Canacona-9, Tbia -9, Kankavli-9, Murud-8, Wada-8,

19 May 2021

GUJARAT REGION: Nadiad-23, Mahudha-16, Anand-16, Daman Fmo-15, Umergam-15, Matar-15, Pardi-14, Daman-14, Khambhat-13, Kheda-13, Tarapur-13, Vaso-13, Olpad-12, Khergam-12, Mahemdavad-12, Dhansura-11, Abad City-11, Jalalpor-11, Sojitra-11, Kathalal-11, Prantij-10, Wanakbori-10, Borsad-10, Navsari-10, Kapadvanj-10, Virpur-10, Modasa-10, Balasinor-9, Dahegam-9, Bayad-9, Bardoli-9, Talod-9, Madhbun-9, Valsad-9, Hansot-9, Vadodara-9, Vagra-9, Meghraj-9, Bhiloda-8, Himatanagar-8, Kamrej-8, Anklav-8, Silvassa-8, Padra-8, Palsana-7, Gandevi-7, Thasra-7, Galteshwar-7, Idar-7, Vapi-7, Poshina-7, Chikhli-7, Sanand-7, Vijapur-7, Khanpur-7, Kaprada-7, Kalol-7, Dascroi-7, Mahuva-7, Lunawada-7, Danta-7, Malpur-7, Petlad-7,

SAURASHTRA & KUTCH: Gir Gadhada-19, Una-18, Bhavnagar-11, Rajula-10, Botad-9, Shihor-9, Visavadar-8, Palitana-8, Vallabhipur-8, Umralla-7,

EAST RAJASTHAN: Veja-23, Kanva-14, Devel-14, Dungarpur Tehsil-14, Dhambola-13, Sarara-13, Girva-11, Aspuri-11, Gogunda-10, Ganeshpur-10, Ajmer Tehsil-9, Railmagra-9, Dungla-9, Sagwara-8, Jhadol-8, Udaipur/D-Aero-8, Ajmer-7, Tatgarh-7, Salumber-7, Nithuwa-7, Bari-Sadri-7, Loharia-7, Dhariabad-7, Badesar-7,

Contact: Cyclone Warning Division, Office of the Director General of Meteorology,
India Meteorological Department, Ministry of Earth Sciences.

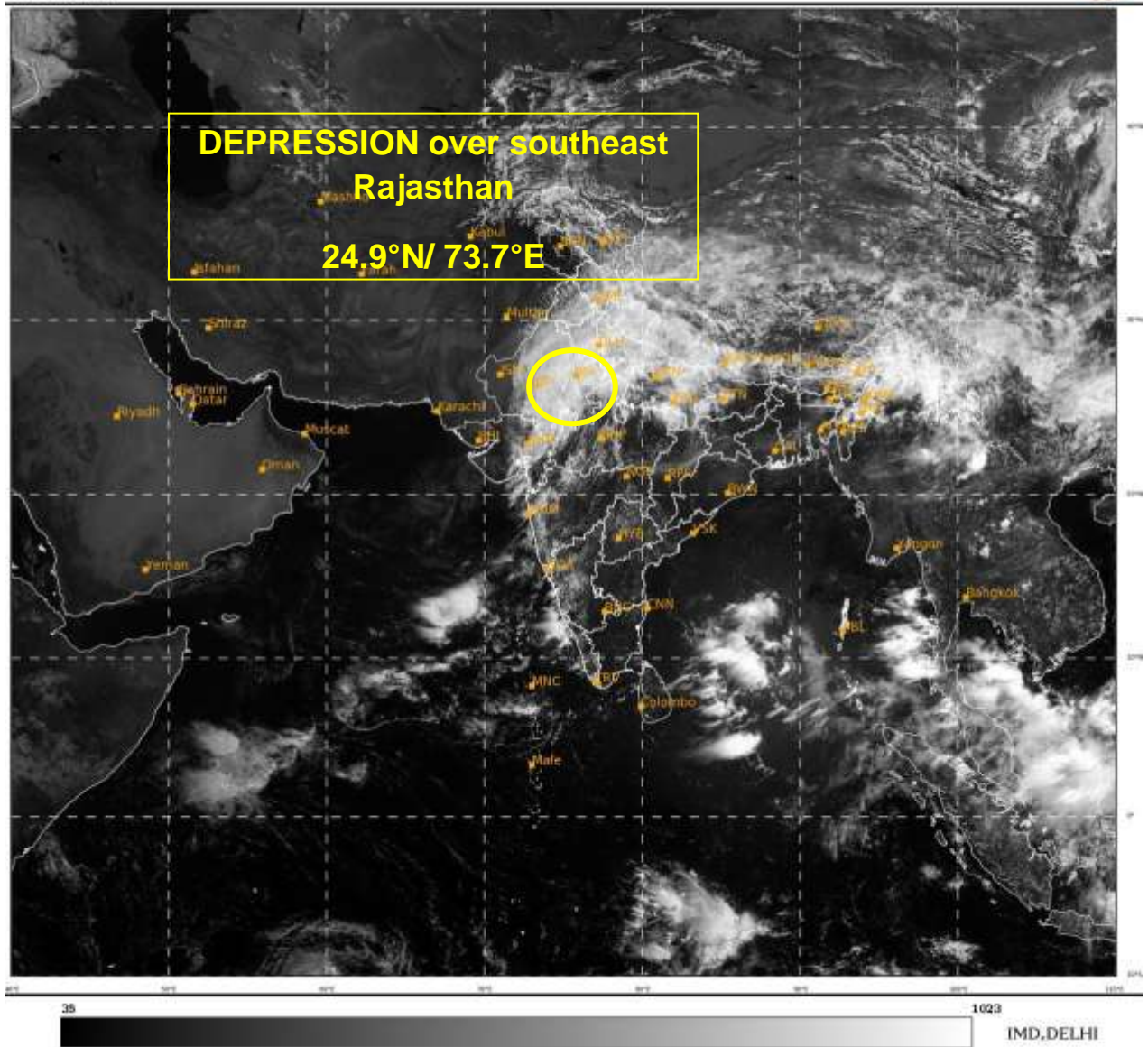
Phone: (91) 11-24652484, FAX: (91) 11-24643128, 24623220, E-mail: cwdhq2008@gmail.com, Website: rsmcnewdelhi.imd.gov.in

Spatial rainfall distribution: Isolated: <25%, A few: 26-50%, Many: 51-75%, Most: 76-100%

Rainfall amount (mm): Heavy rain: 64.5 – 115.5, Very heavy rain: 115.6 – 204.4, Extremely heavy rain: 204.5 or more.

SAT : INSAT-3DR IMG
Visible Count 0.65 um
LIC Mercator

19-05-2021/(0445 to 0512) GMT
19-05-2021/(1015 to 1042) IST



Contact: Cyclone Warning Division, Office of the Director General of Meteorology,
India Meteorological Department, Ministry of Earth Sciences.

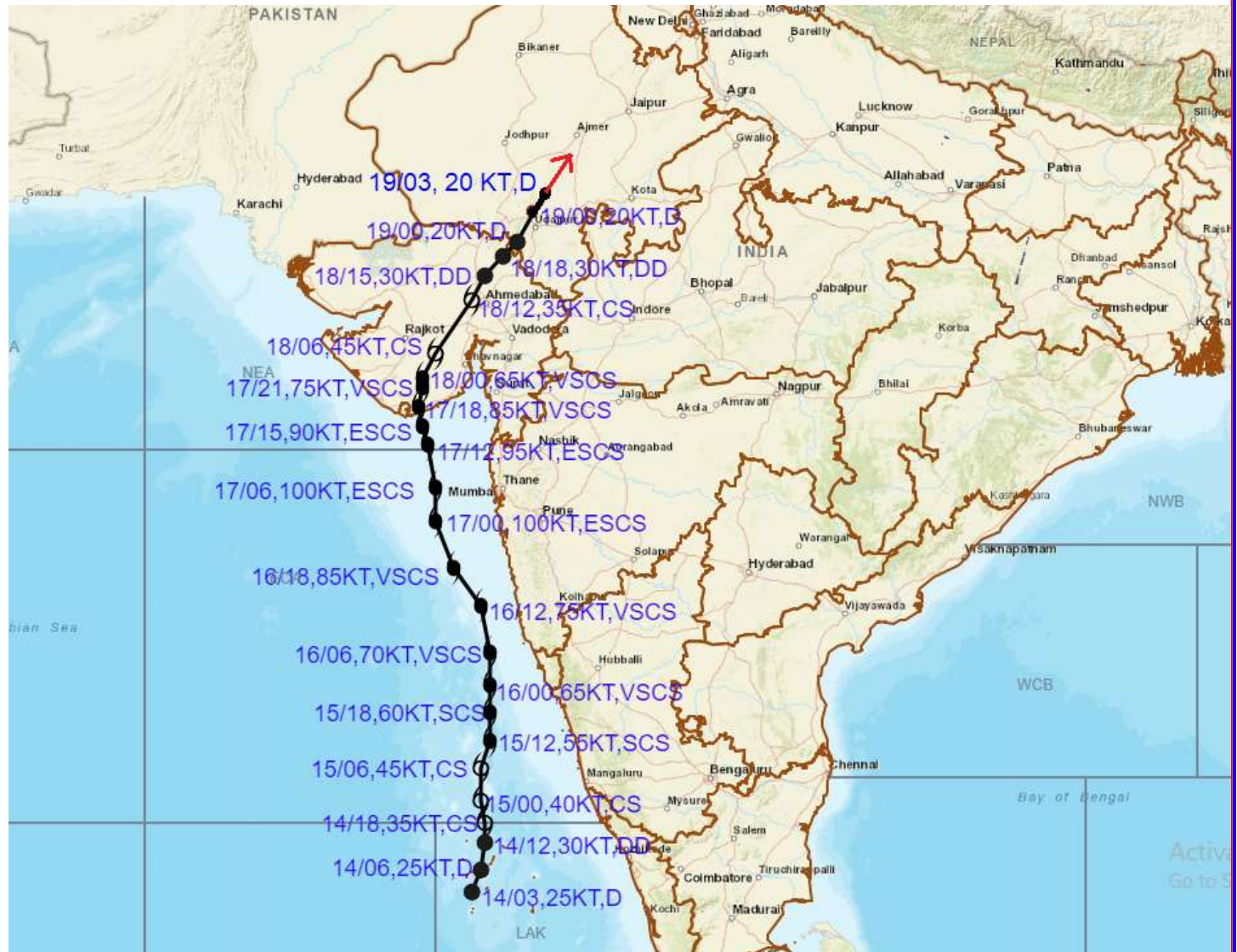
Phone: (91) 11-24652484, FAX: (91) 11-24643128, 24623220, E-mail: cwdhq2008@gmail.com, Website: rsmcnewdelhi.imd.gov.in

Spatial rainfall distribution: Isolated: <25%, A few: 26-50%, Many: 51-75%, Most: 76-100%

Rainfall amount (mm): Heavy rain: 64.5 – 115.5, Very heavy rain: 115.6 – 204.4, Extremely heavy rain: 204.5 or more.



OBSERVED AND FORECAST TRACK OF DEPRESSION (REMNANT OF "TAUKTAE") OVER SOUTHEAST RAJASTHAN BASED ON 0300 UTC OF 19TH MAY, 2021



DATE/TIME IN UTC
 IST=UTC + 0530
 L: LOW PRESSURE AREA
 WML: WELL MARKED LOW PRESSURE AREA
 D: DEPRESSION (17-27 KT)
 DD: DEEP DEPRESSION (28-33 KT)
 CS: CYCLONIC STORM (34-47 KT)
 SCS: SEVERE CYCLONIC STORM (48-63KT)
 VSCS: VERY SEVERE CYCLONIC STORM (64-89 KT)
 ESCS: EXTREMELY SEVERE CYCLONIC STORM (90-119 KT)
 SuCS: SUPER CYCLONIC STORM (\geq 120 KT)

- LESS THAN 34 KT
- 34-47 KT
- \geq 48 KT
- OBSERVED TRACK
- FORECAST TRACK
- CONE OF UNCERTAINTY

Contact: Cyclone Warning Division, Office of the Director General of Meteorology,
 India Meteorological Department, Ministry of Earth Sciences.

Phone: (91) 11-24652484, FAX: (91) 11-24643128, 24623220, E-mail: cwdhq2008@gmail.com, Website: rsmcnewdelhi.imd.gov.in

Spatial rainfall distribution: Isolated: <25%, A few: 26-50%, Many: 51-75%, Most: 76-100%

Rainfall amount (mm): Heavy rain: 64.5 – 115.5, Very heavy rain: 115.6 – 204.4, Extremely heavy rain: 204.5 or more.